

Get ready and vote in the 2020 General Election and referendums.

The Easy Read guide to voting.



Developed with input from
People First New Zealand, Ngā Tāngata Tuatahi



About this booklet



This booklet has information about how to:

- enrol to vote
- vote in the 2020 General Election
- vote in the 2020 referendums.



About the 2020 General Election



At the general election you can vote for the people and parties who will:

- be in Parliament
- make decisions that affect your life.

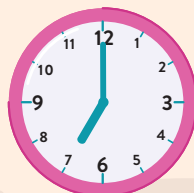
Parliament is all the people and parties who have been chosen in the election.

Some of the parties in Parliament will form the Government.



The New Zealand Government decides on things that affect your life like:

- schools
- hospitals
- roads.



Voting in the 2020 General Election and referendums:

- starts on Saturday 5 September
- ends at 7pm on election day which is Saturday 19 September.

About the 2020 General Election



In the general election you get 2 votes to choose the:

- political group you want to be the New Zealand Government
- person you want to represent your local area in Parliament.



A political group is also called a political party.



The person who represents your local area in Parliament is called a member of Parliament.

About the referendums



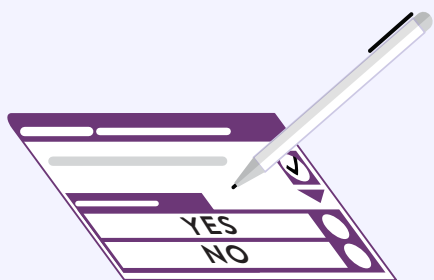
There will be 2 referendums held at the same time as the general election.

A referendum is when most people in New Zealand can vote on a question.

You can vote on if the **End of Life Choice Act 2019** should come into force.



You can also vote on if the recreational use of cannabis should become legal based on the proposed **Cannabis Legalisation and Control Bill**.



You vote by answering the referendum questions with:

Yes or **No**



You can find Easy Read information about the referendums at:

referendums.govt.nz

About choosing who to vote for



It is your choice:

- who you want to vote for in the general election
- how you want to vote in the referendums.

Nobody is allowed to tell you who to vote for.



Here is a list of where you could find more information to help you choose who to vote for:

- newspaper
- television
- radio
- public meetings
- your friends
- your family.



About getting enrolled to vote

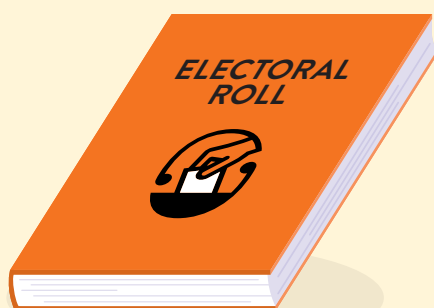


You have to be enrolled to vote in:

- the general election
- the referendums.

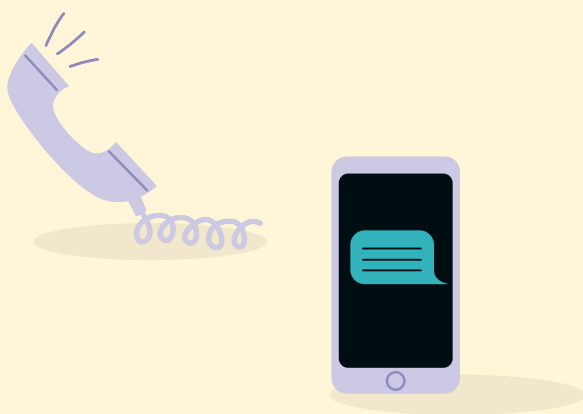
To get enrolled, you have to fill in an enrolment form.

When you enrol, your name will go on the electoral roll.



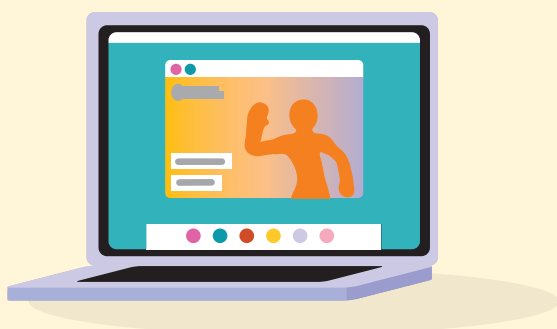
The electoral roll is the list of all the people who have enrolled to vote.

If you are Māori and enrolling for the first time, you get to choose if you want to be on the Māori or the general roll.



To get an enrolment form you can:

- call **0800 36 76 56**
- text your name and address to **3676**
- visit **vote.nz**.

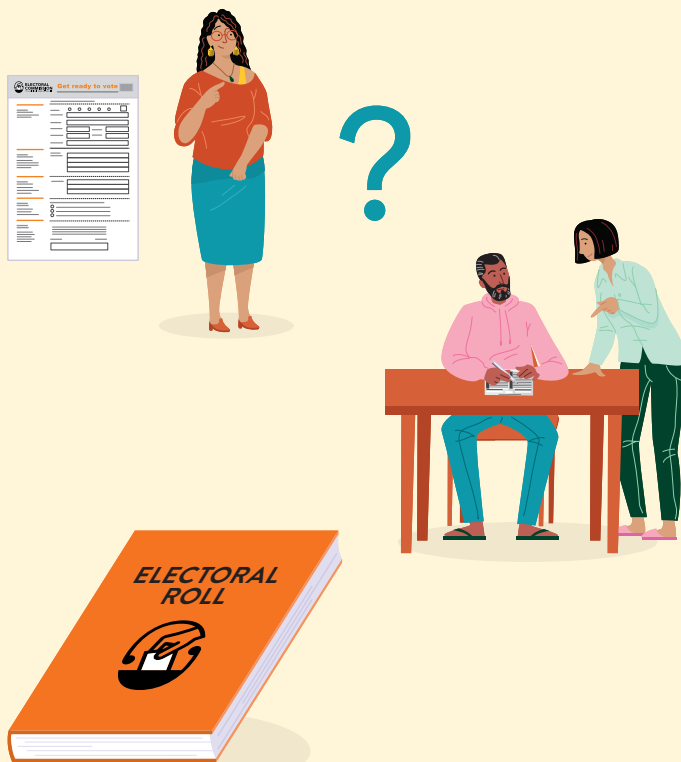


You can also enrol online at **vote.nz**

To enrol online you will need to use your:

- New Zealand driver licence or
- New Zealand passport or
- RealMe verified identity.

About getting enrolled to vote

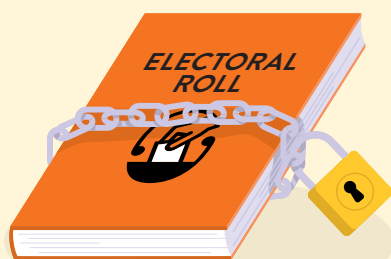


The enrolment form will ask for information about you.

It is important to put the right information on the enrolment form.

If you need help to put your information on the enrolment form ask someone to help you.

After you have enrolled to vote your name will go on the electoral roll.



If you are worried about your safety if your name goes on the electoral roll, you can ask to go on the Unpublished Roll.

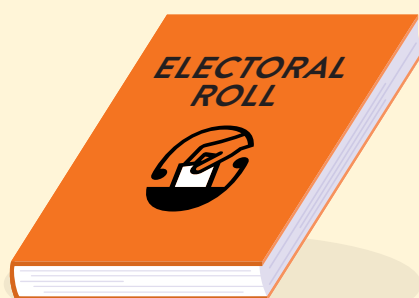
Your personal details won't be given to anyone.



You must update your information on the electoral roll if you:

- move to a different place
- change your name.

Who can get enrolled to vote?



In New Zealand you must enrol to vote if you:

- are 18 years or older, and
- have lived in New Zealand for more than one year at some time in your life, and
- are a New Zealand citizen who is living in New Zealand now, or
- are a permanent resident who is living in New Zealand now.



You can enrol to vote any time:

- before election day
- on election day which is Saturday 19 September.

You can also enrol at a voting place when you go to vote.



About how you can vote in the 2020 General Election and referendums



Election day is the date when the election happens.

You can vote:

- on election day which is Saturday 19 September
- before election day.

Voting places are open for 2 weeks before election day from Saturday 5 September.

You can vote at any voting place in New Zealand.

There will be someone at the voting place to show you what to do.



Do your best to enrol by 16 August.

If you enrol by 16 August you will get an information pack in the mail about a week before voting begins.

The information pack has:

- your EasyVote card
- where to vote
- when to vote
- a list of people to choose from
- a list of political groups to choose from.



Use hand sanitiser when you:

- go into the voting place
- leave the voting place.

It is best to bring your own pen.

There will still be pens for you to use if you do not bring one.

About how you can vote in the 2020 General Election and referendums



When you go to a voting place take your EasyVote card with you.

Give your EasyVote card to the person that works at the voting place.

You can vote without an EasyVote card but it will take longer.



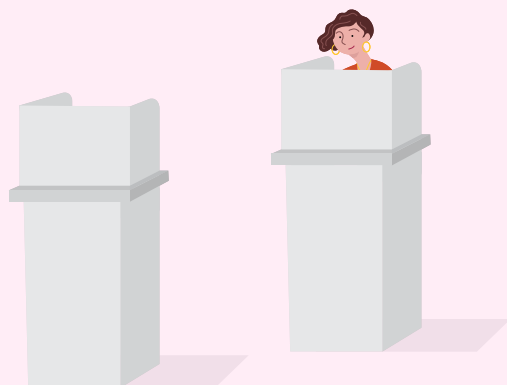
The person who works at the voting place will:

- find your name on the electoral roll
- cross your name off the electoral roll
- give your voting paper to you.



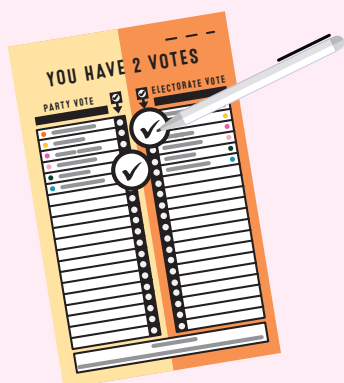
If you do not have an EasyVote card you will have to tell the person who works at the voting place your:

- full name
- address.



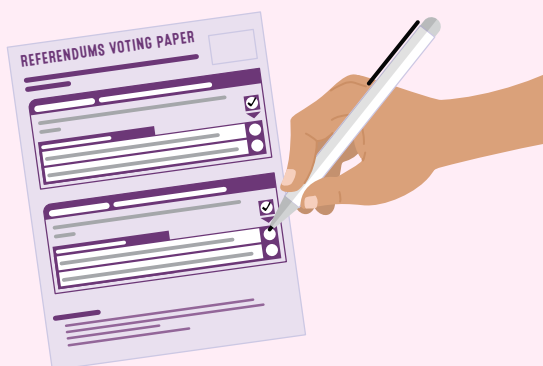
After you get your voting papers take them behind the voting screen.

About how you can vote in the 2020 General Election and referendums



On your voting paper for the general election put a tick by the name of the:

- political group you want to be the New Zealand Government
- person you want to represent your local area in Parliament.



On your voting paper for the referendums put a tick next to your answer to each referendum question.

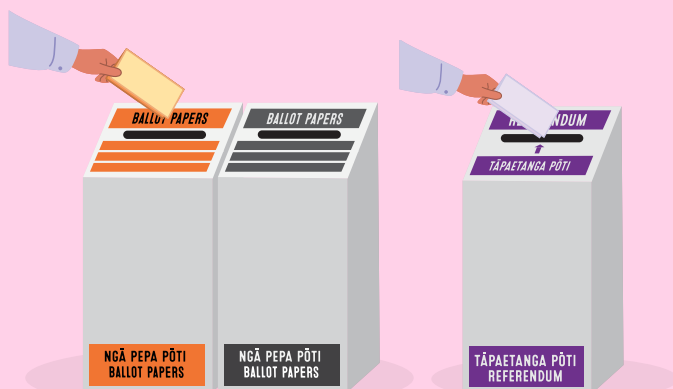
You can answer:

Yes or **No**



After you've finished marking your voting papers:

- fold them in half
- put your voting paper for the election in the voting box for your **electorate**
- put your referendums voting paper in the purple voting box.



Your **electorate** is your local area.

If you are voting in a general electorate the box will be orange.

If you have chosen to vote in a Māori electorate the box will be grey.

Voting support



You can get support to vote from a:

- friend
- person in your family
- person who works at the voting place.



A support person is allowed to:

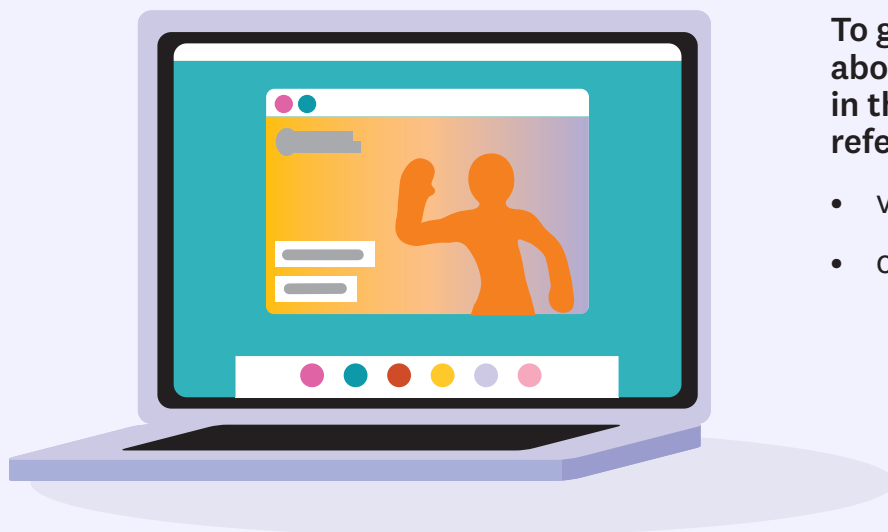
- go with you behind the voting screen
- read out loud the words on the voting paper
- tick the voting paper if you ask them to.



A support person is not allowed to tell you:

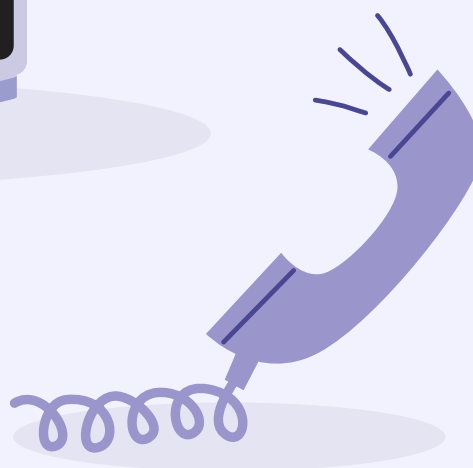
- who to vote for in the general election
- how you should vote in the referendums.

More information about the 2020 General Election and referendums



To get more information about how to enrol and vote in the general election and referendums you can:

- visit **vote.nz**
- call **0800 36 76 56**.



To get more information about the referendums you can:

- visit **referendums.govt.nz**
- call **0800 36 76 56**.





Level 10, 34-42 Manners Street,
PO Box 3220, Wellington 6140.